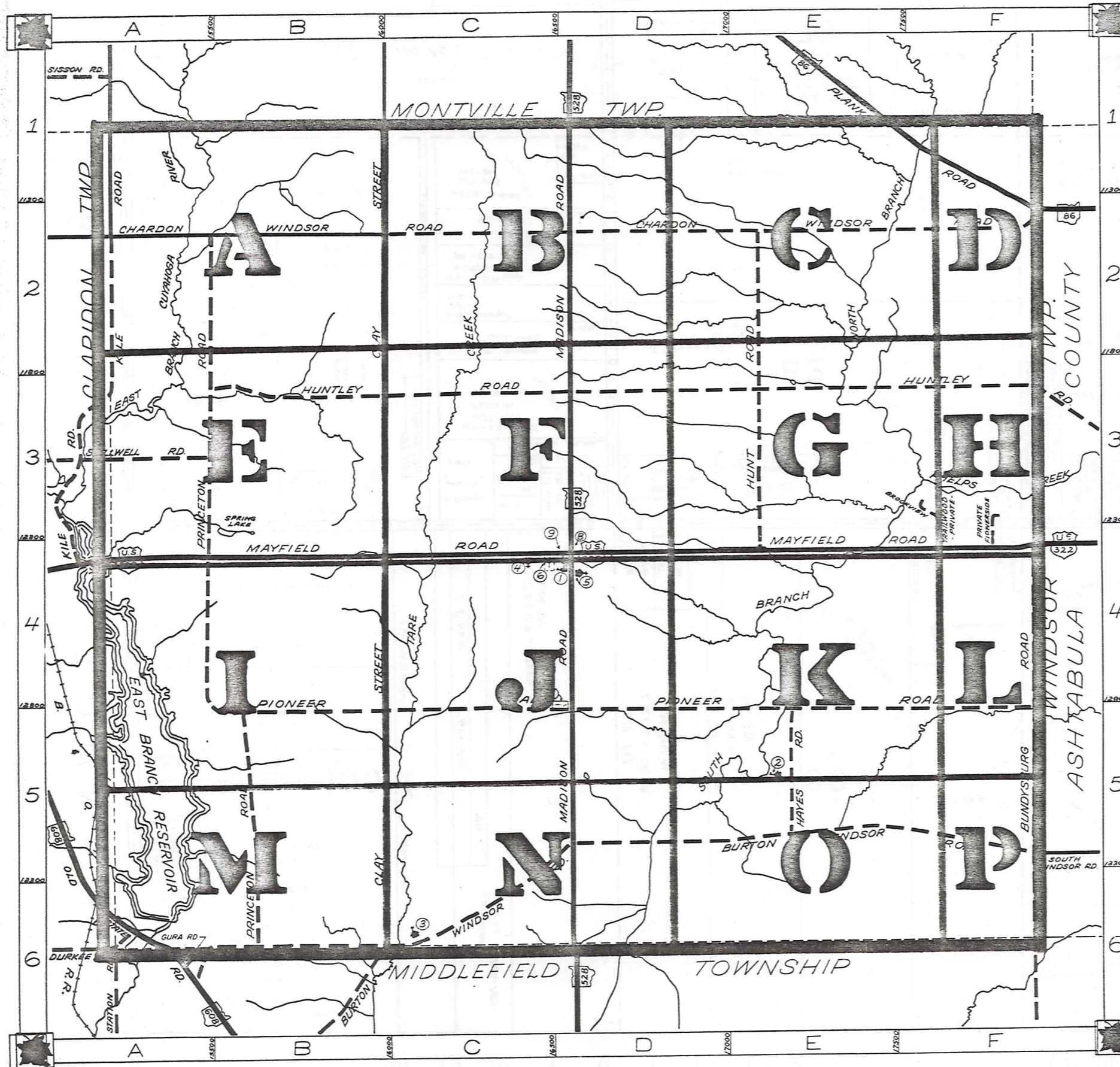


ROAD INDEX



A	J	STILLWELL RD.	A3
B	K	BROOKVIEW RD. F3 BUNDYSBURG RD. F4-F6 BURTON WINDSOR RD. C6-F5	TRAILWOOD RD. F4
C	L	CHARDON WINDSOR RD. A2-F2 CLAY STREET B1-B6	
D	M	DURKEE RD. A6-B6	MADISON RD. D1-D6 MAYFIELD RD. A4-F4
E	N		OLD STATE RD. A6
F	O	FLOWERSIDE RD. F4	
G	P		PIONEER RD. B5-F5 PLANK RD. E1-F2 PRINCETON RD. B2-B6
H	Q	HAYES RD. E5 HUNTLEY RD. B3-F3 HUNT RD. E2-E4	
I	R		

- ① HUNTSBURG ELEM. SCHOOL
- ② AMISH SCHOOL
- ③ AMISH SCHOOL
- ④ HUNTSBURG BAPTIST CH.
- ⑤ HUNTSBURG CONGREGATIONAL CH.
- ⑥ HUNTSBURG CEMETERY
- ⑦ HUNTSBURG CEMETERY
- ⑧ UNITED STATES POST OFFICE
- ⑨ TOWN HALL
- ⑩

HUNTSBURG TOWNSHIP

SCALE: 1" = 2000'
 ROBERT L. PHILLIPS,
 GEALGA COUNTY ENGINEER

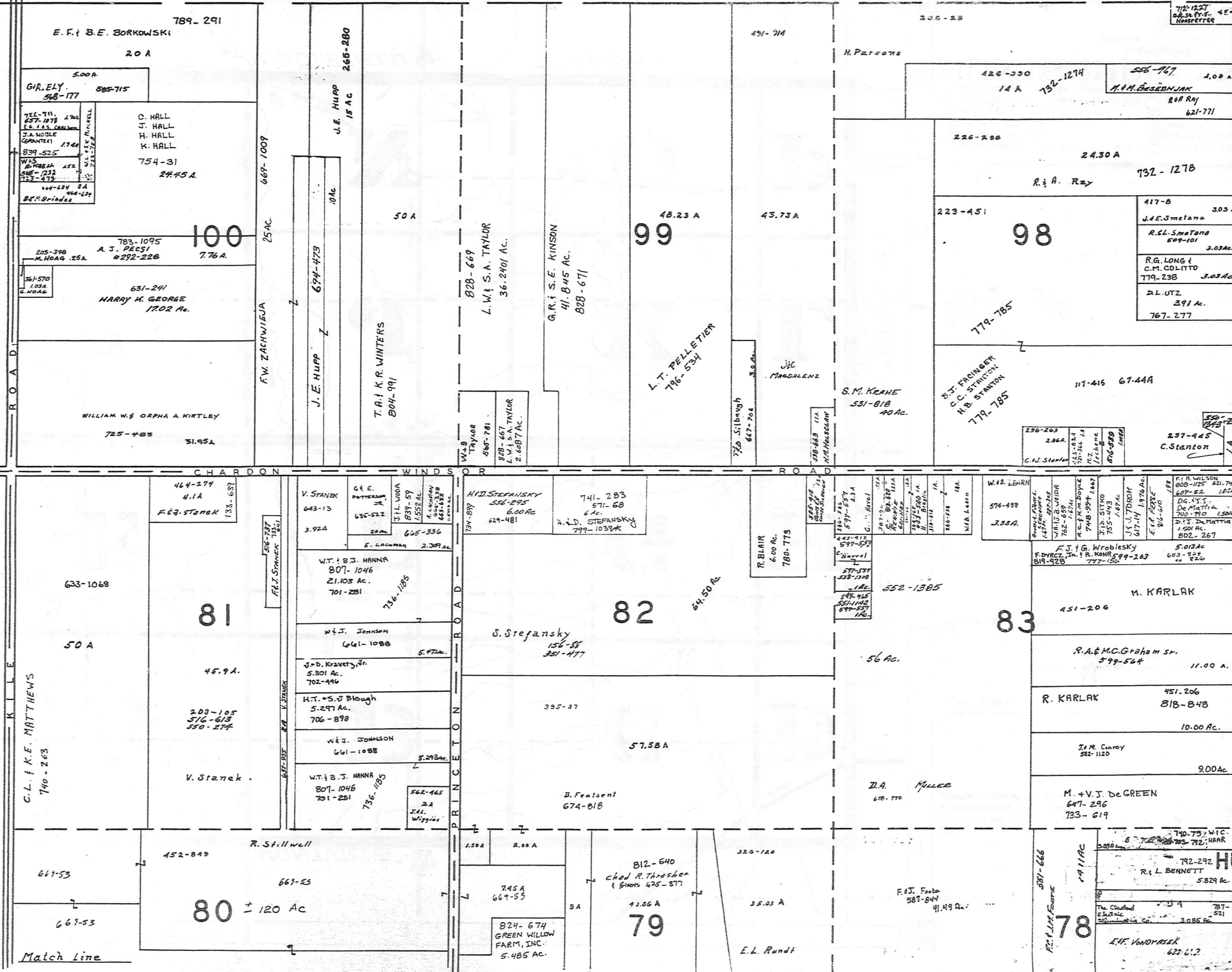
--- UNPAVED ROADS
 --- PAVED ROADS
 --- TOWNSHIP LINE
 --- COUNTY LINE



MONTVILLE TOWNSHIP

TOWNSHIP

CLARIDON



SCALE 1 = 300

JAN 1, 1984

A	B	C	D
E	F	G	H
I	J	K	L
M	N	O	P

RELATIVE REPRESENTATION

100' = 1" (approx)

* Inadequate description

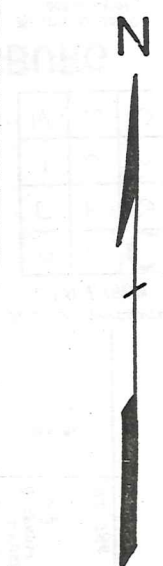
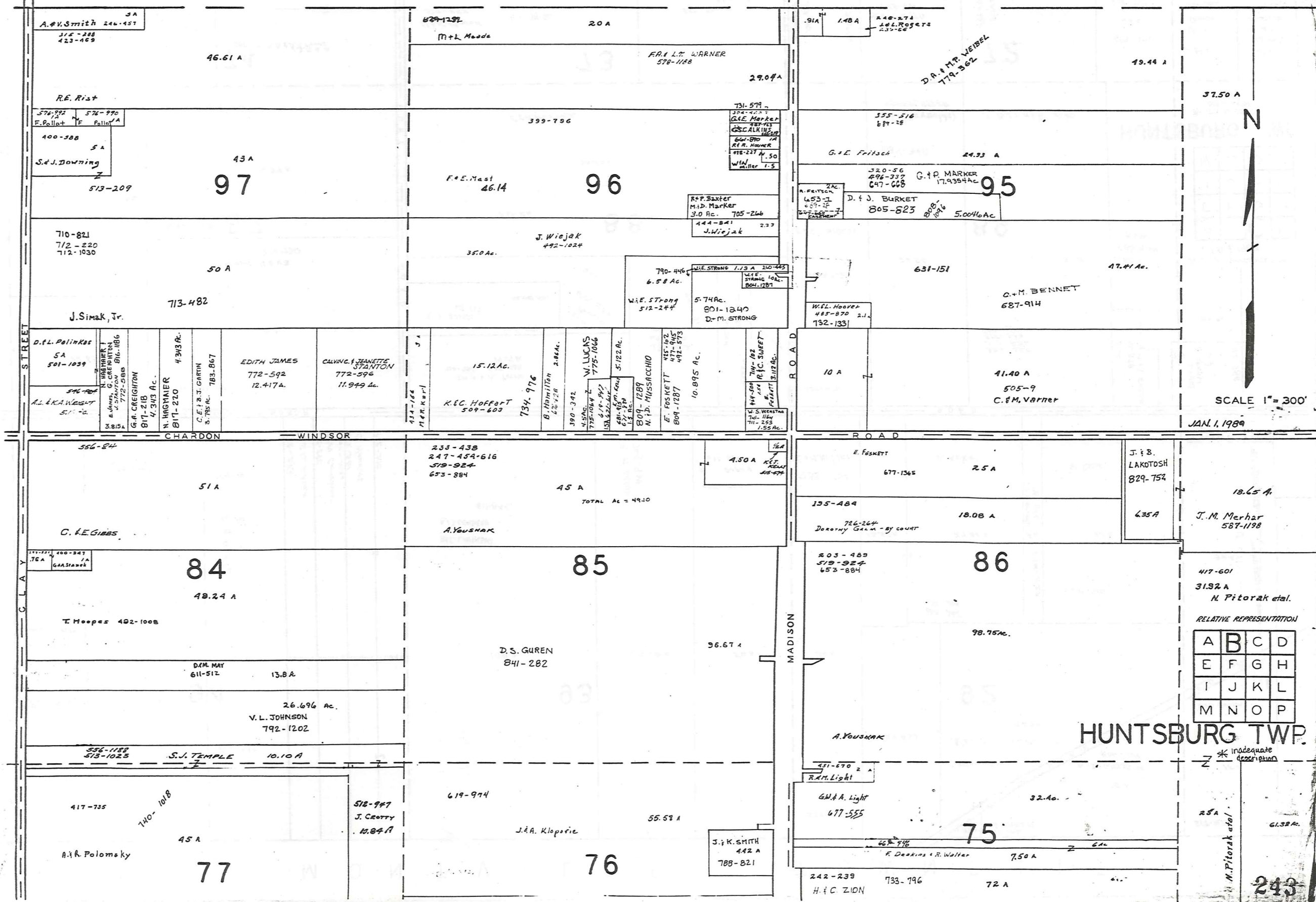
Match Line

HUNTSBURG TWP



MONTVILLE

TOWNSHIP



SCALE 1" = 300'

JAN. 1, 1989

RELATIVE REPRESENTATION

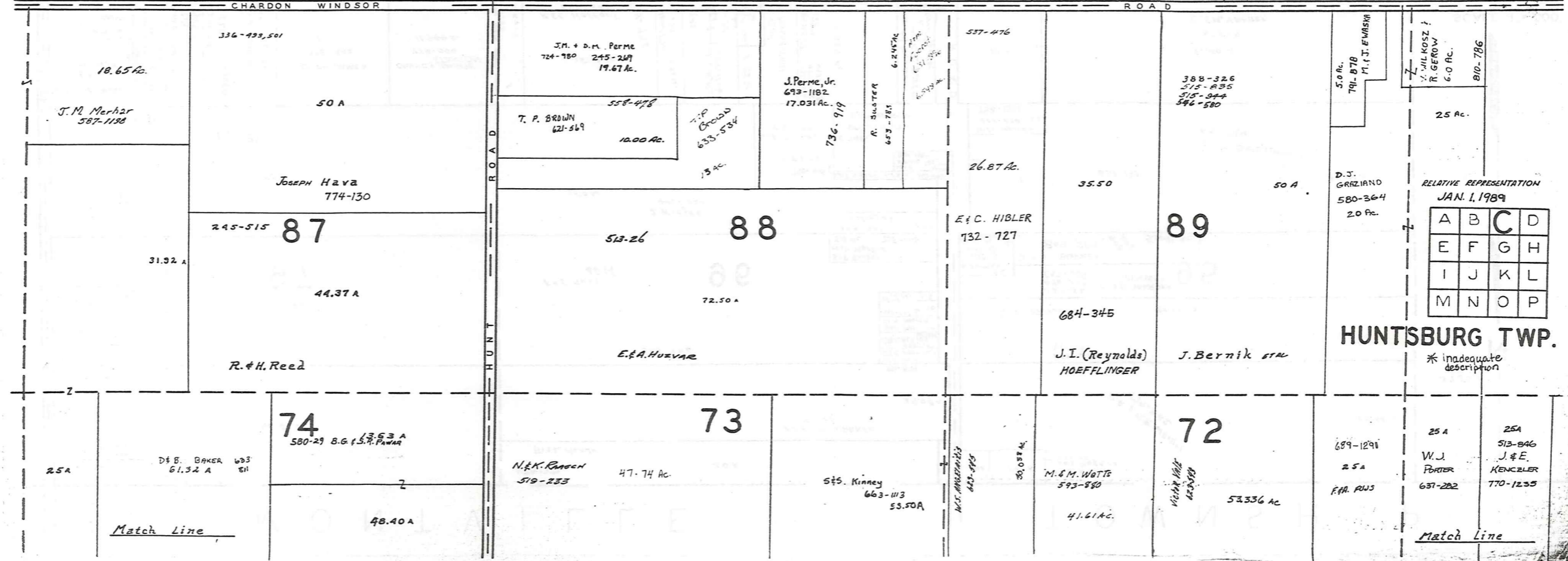
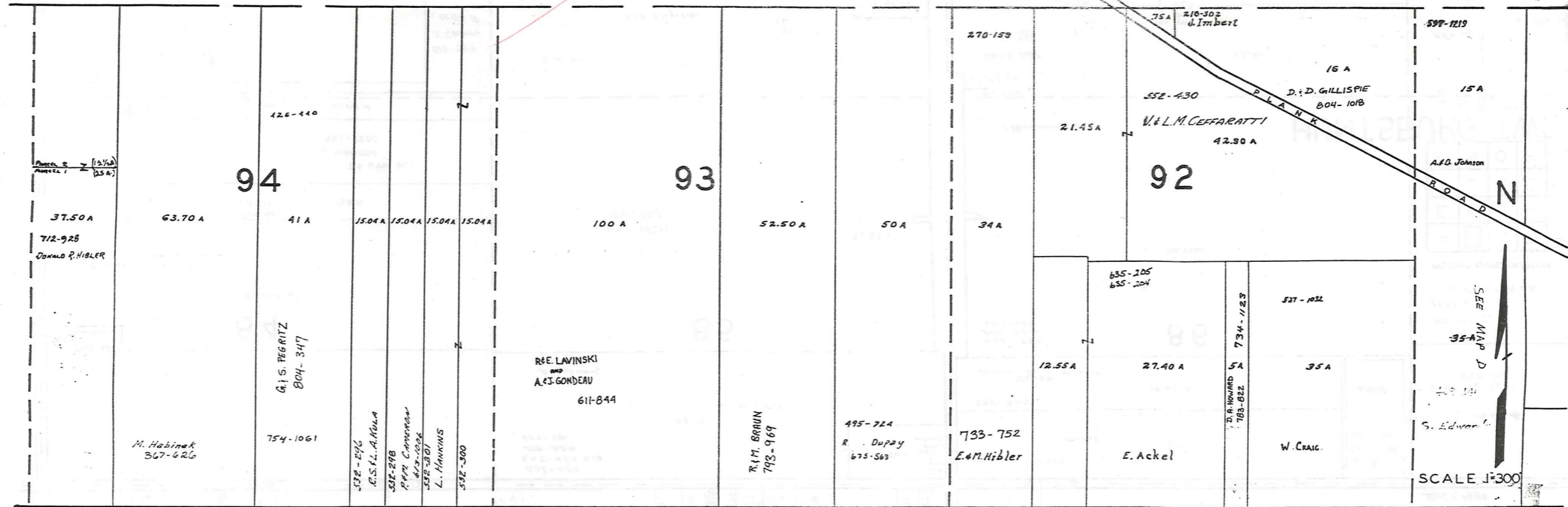
A	B	C	D
E	F	G	H
I	J	K	L
M	N	O	P

HUNTSBURG TWP.

* Inadequate description

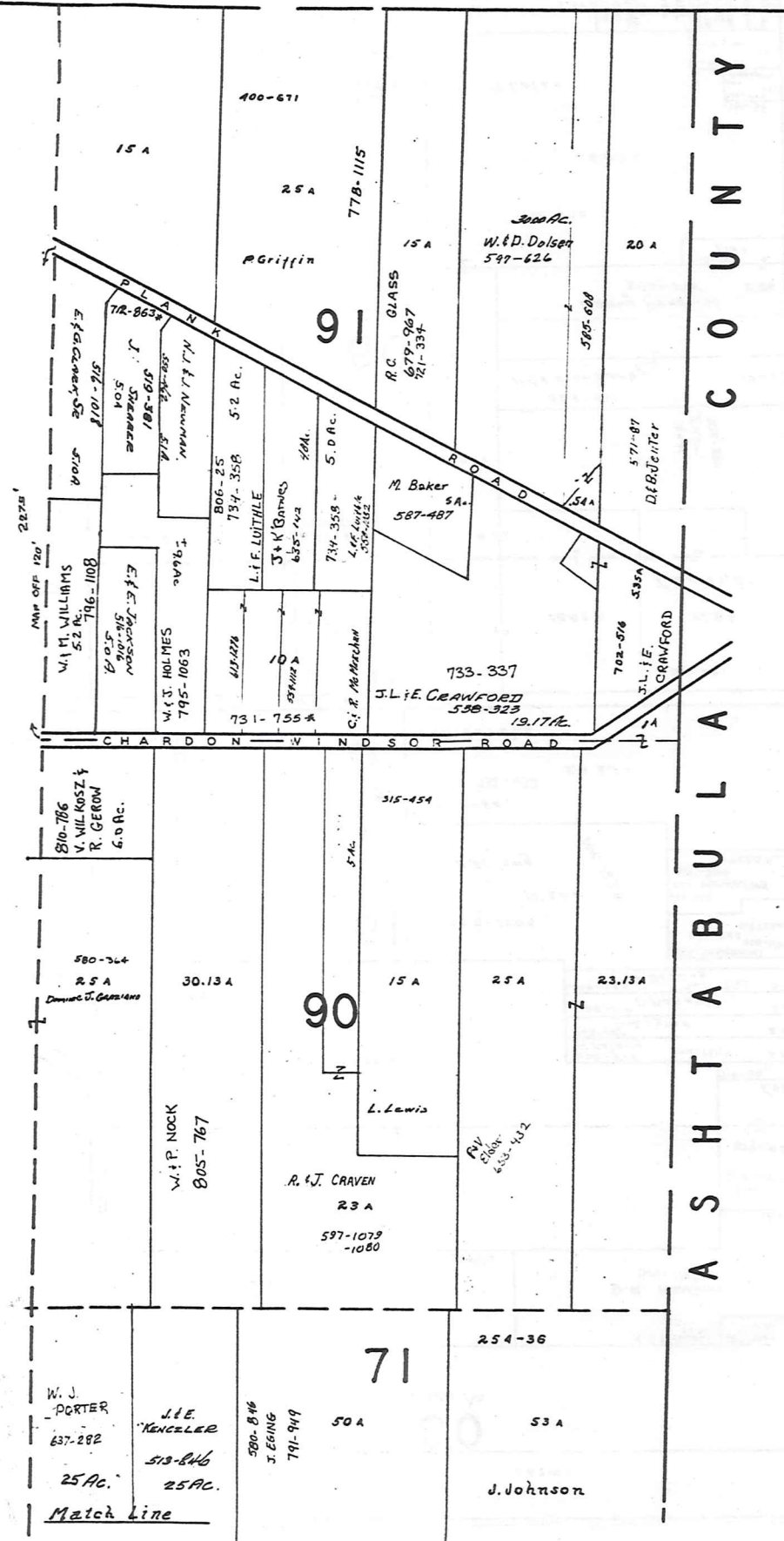
243

MONTVILLE TOWNSHIP



SEE MAP D
SCALE 1"=300'

MONTVILLE TWP.



A S H T A B U L A C O U N T Y



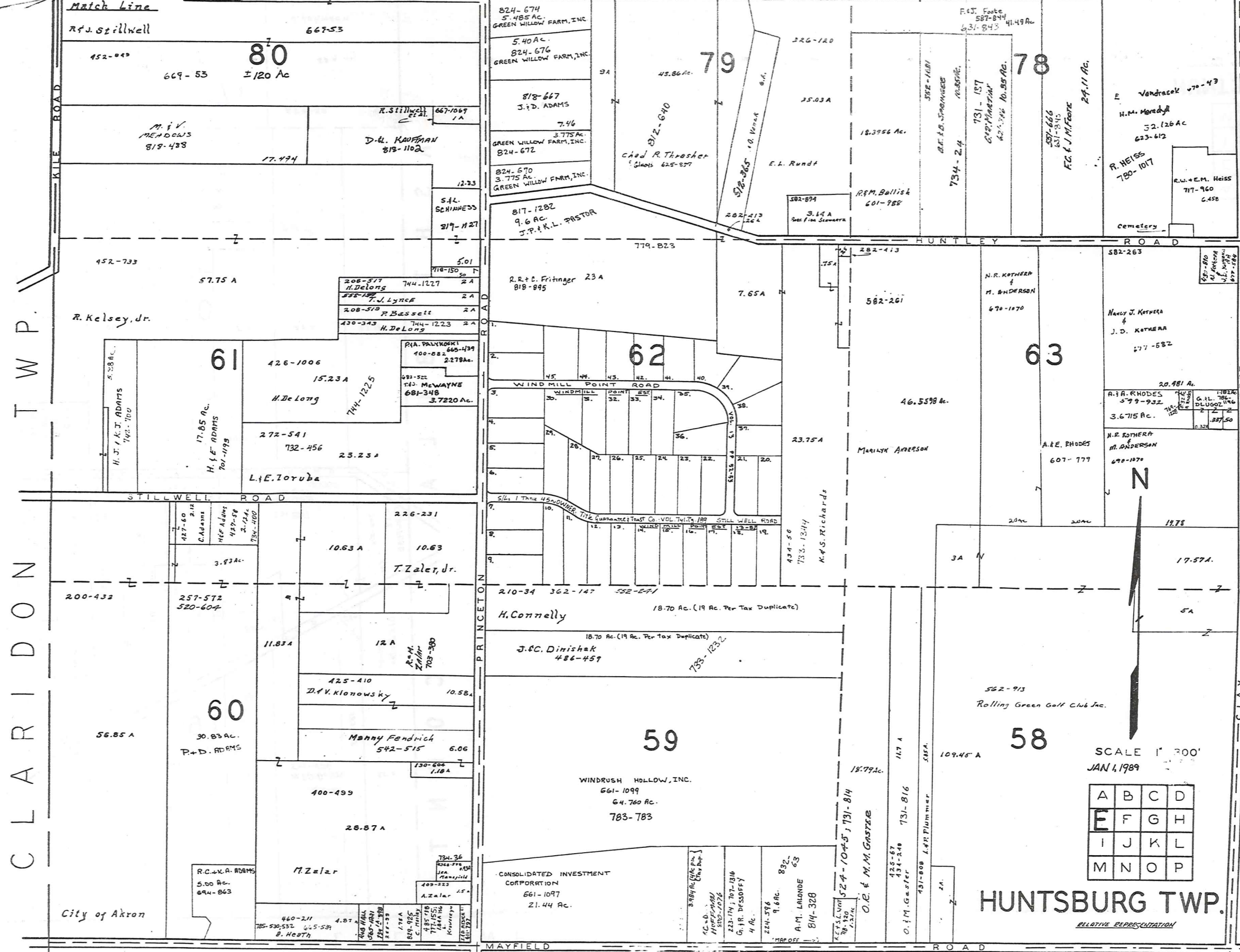
SCALE 1"=300'

JAN. 1, 1989

* Inadequate description

A	B	C	D
E	F	G	H
I	J	K	L
M	N	O	P

HUNTSBURG TWP.
RELATIVE REPRESENTATION



Match Line

Match Line

T W P.

C L A R I D O N

C L A Y

W. J. Spillwell

M. & V. MEADOWS

R. Kelsey, Jr.

200-433

56.85 A

City of Akron

80

669-53 ±120 Ac

61

426-1006 15.23 A H. De Long
272-541 732-456 23.23 A L. E. Toruba

60

30.83 Ac. P. & D. ADAMS

R. & A. ADAMS 5.00 Ac. 694-863

208-517 H. DeLong 744-1227 2 A
585-188 F. J. Lynch 2 A
208-518 R. Bessett 2 A
430-343 H. DeLong 744-1223 2 A

RIA. PALYKOWSKI 100-882 665-439 2.178 Ac.
481-522 T. McWAYNE 681-348 3.7220 Ac.

10.63 A 10.63 T. Zales, Jr.
11.83 A 12 A R. M. Zales 703-380

11.83 A 12 A R. M. Zales 703-380
425-410 D. V. Klonowsky 10.58 A
Manny Fendrich 542-515 6.06

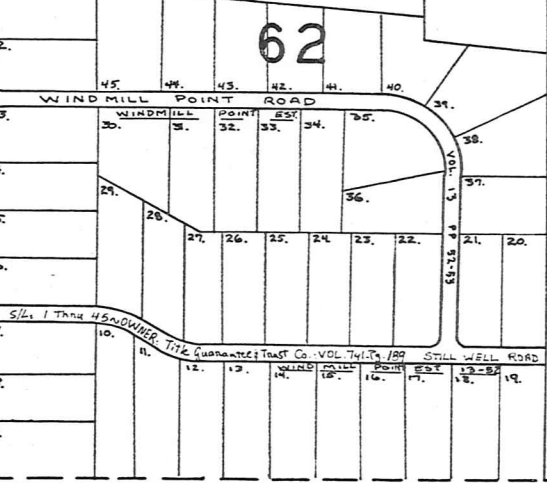
400-499 28.87 A
M. Zales

734-36 400-499 1.18 A
400-223 A. Zales
460-211 4.87 785-530, 532 665-531 B. Heath

824-674 5.40 Ac. GREEN WILLOW FARM, INC.
824-676 7.46 GREEN WILLOW FARM, INC.
818-667 J. D. ADAMS
3.775 Ac. GREEN WILLOW FARM, INC. 824-672
824-670 3.775 Ac. GREEN WILLOW FARM, INC.

817-1282 9.6 Ac. J. P. & K. L. PASTOR

R. R. & C. Fritinger 23 A 818-895



210-34 362-147 552-541 18.70 Ac. (19 Ac. Per Tax Duplicate) H. Connelly

18.70 Ac. (19 Ac. Per Tax Duplicate) J. C. Dinishak 486-459

59 WINDRUSH HOLLOW, INC. 661-1099 64.760 Ac. 783-783

CONSOLIDATED INVESTMENT CORPORATION 661-1097 21.44 Ac.

MAYFIELD ROAD

79

45.86 Ac. 312-640
Chad R. Thresher
Clayton 625-877

817-1282 9.6 Ac. J. P. & K. L. PASTOR

62

18.70 Ac. (19 Ac. Per Tax Duplicate)

59

CONSOLIDATED INVESTMENT CORPORATION 661-1097 21.44 Ac.

78

18.3956 Ac. R. M. Ballish 601-958

817-1282 9.6 Ac. J. P. & K. L. PASTOR

582-261

46.5598 Ac. Marilyn Anderson

18.70 Ac. (19 Ac. Per Tax Duplicate)

58

CONSOLIDATED INVESTMENT CORPORATION 661-1097 21.44 Ac.

78

18.3956 Ac. R. M. Ballish 601-958

817-1282 9.6 Ac. J. P. & K. L. PASTOR

582-261

46.5598 Ac. Marilyn Anderson

18.70 Ac. (19 Ac. Per Tax Duplicate)

58

CONSOLIDATED INVESTMENT CORPORATION 661-1097 21.44 Ac.

78

18.3956 Ac. R. M. Ballish 601-958

817-1282 9.6 Ac. J. P. & K. L. PASTOR

582-261

46.5598 Ac. Marilyn Anderson

18.70 Ac. (19 Ac. Per Tax Duplicate)

58

CONSOLIDATED INVESTMENT CORPORATION 661-1097 21.44 Ac.

78

18.3956 Ac. R. M. Ballish 601-958

817-1282 9.6 Ac. J. P. & K. L. PASTOR

582-261

46.5598 Ac. Marilyn Anderson

18.70 Ac. (19 Ac. Per Tax Duplicate)

58

CONSOLIDATED INVESTMENT CORPORATION 661-1097 21.44 Ac.

78

18.3956 Ac. R. M. Ballish 601-958

817-1282 9.6 Ac. J. P. & K. L. PASTOR

582-261

46.5598 Ac. Marilyn Anderson

18.70 Ac. (19 Ac. Per Tax Duplicate)

58

CONSOLIDATED INVESTMENT CORPORATION 661-1097 21.44 Ac.

78

18.3956 Ac. R. M. Ballish 601-958

817-1282 9.6 Ac. J. P. & K. L. PASTOR

582-261

46.5598 Ac. Marilyn Anderson

18.70 Ac. (19 Ac. Per Tax Duplicate)

58

CONSOLIDATED INVESTMENT CORPORATION 661-1097 21.44 Ac.

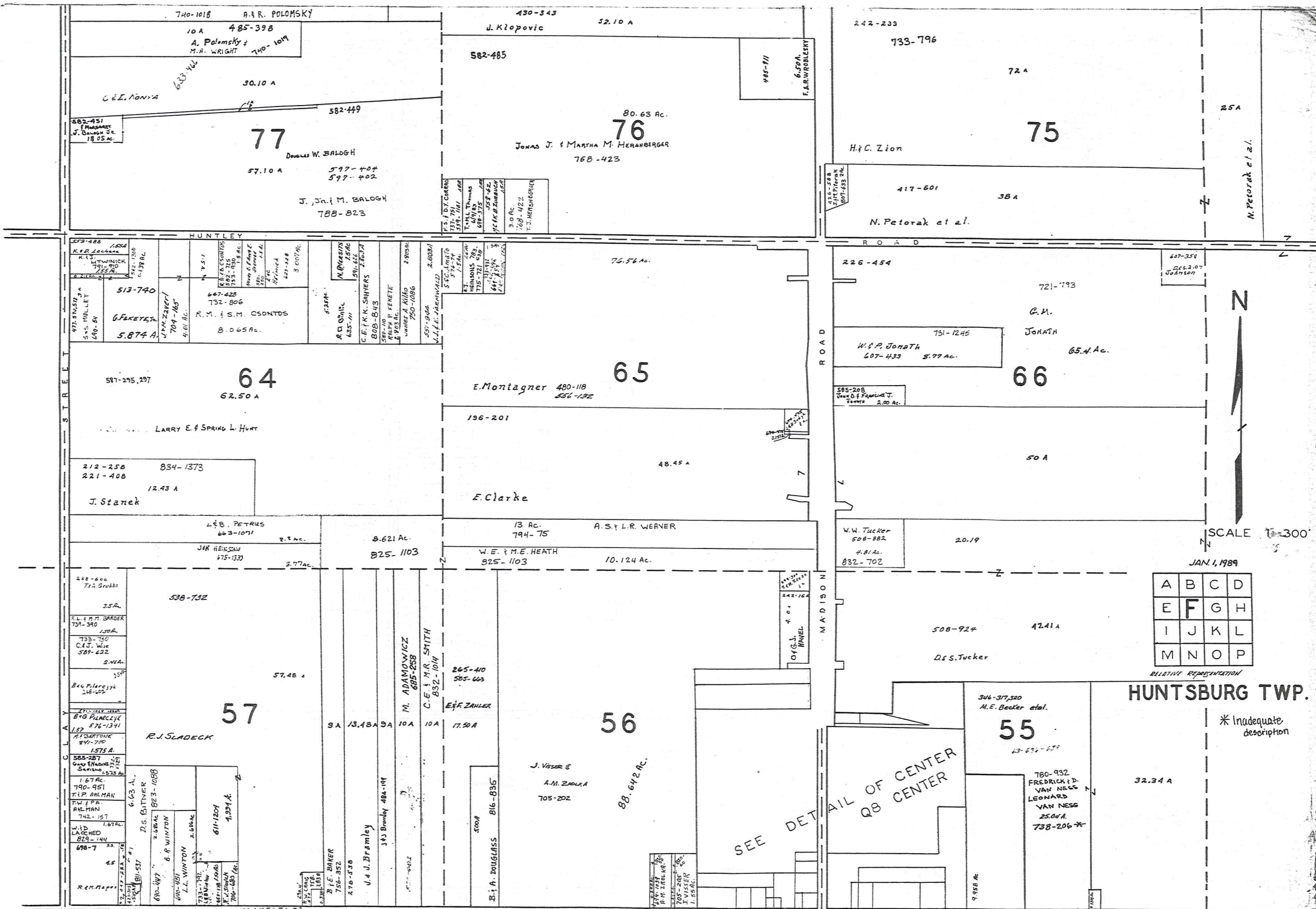
SCALE 1" = 200'
JAN 4, 1989

A	B	C	D
E	F	G	H
I	J	K	L
M	N	O	P

HUNTSBURG TWP.

RELATIVE REPRESENTATION

* Inadequate description



SCALE 1"=300'

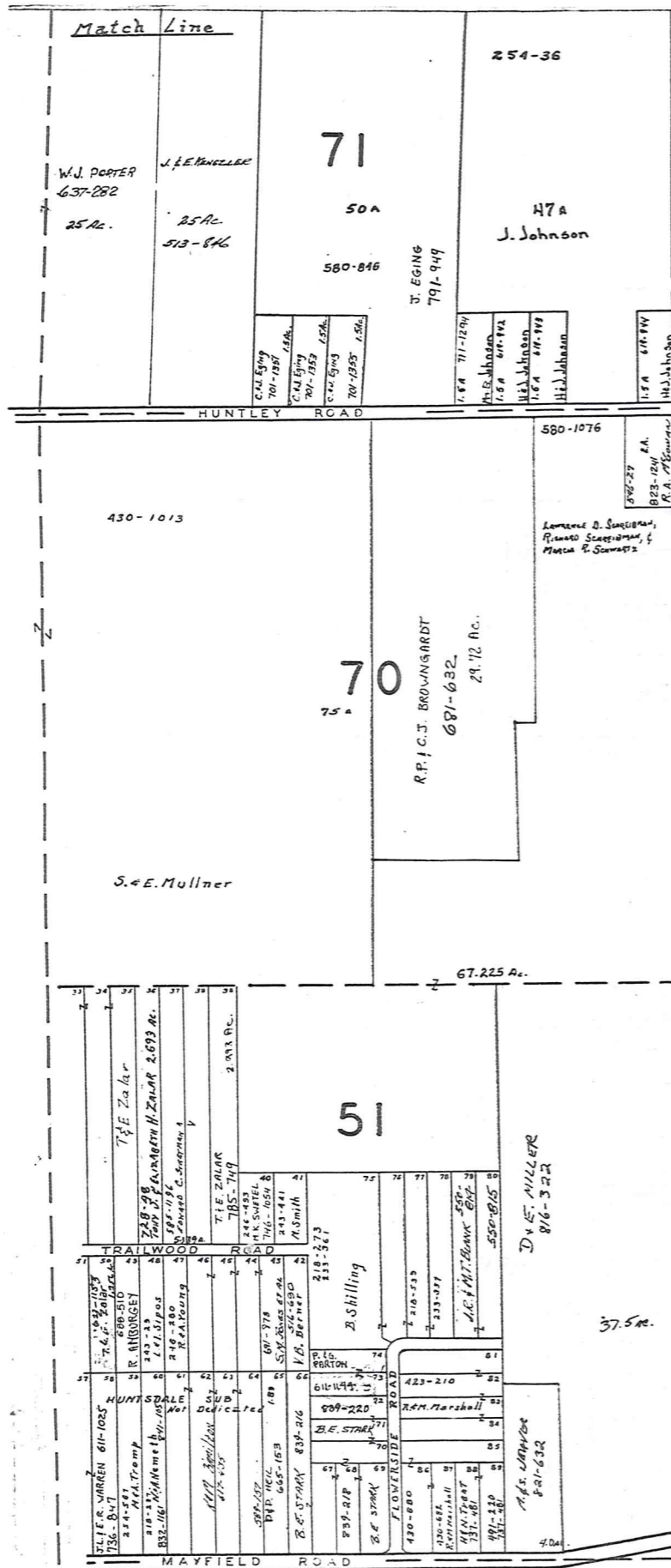
JAN. 1, 1989

A	B	C	D
E	F	G	H
I	J	K	L
M	N	O	P

RELATIVE REPRESENTATION

HUNTSBURG TWP.

* Inadequate description



A S H L A N D C O U N T Y



* Inadequate description

JAN 1, 1989
Scale 1" = 300'

A	B	C	D
E	F	G	H
I	J	K	L
M	N	O	P

RELATIVE REPRESENTATION

HUNTSBURG TWP.

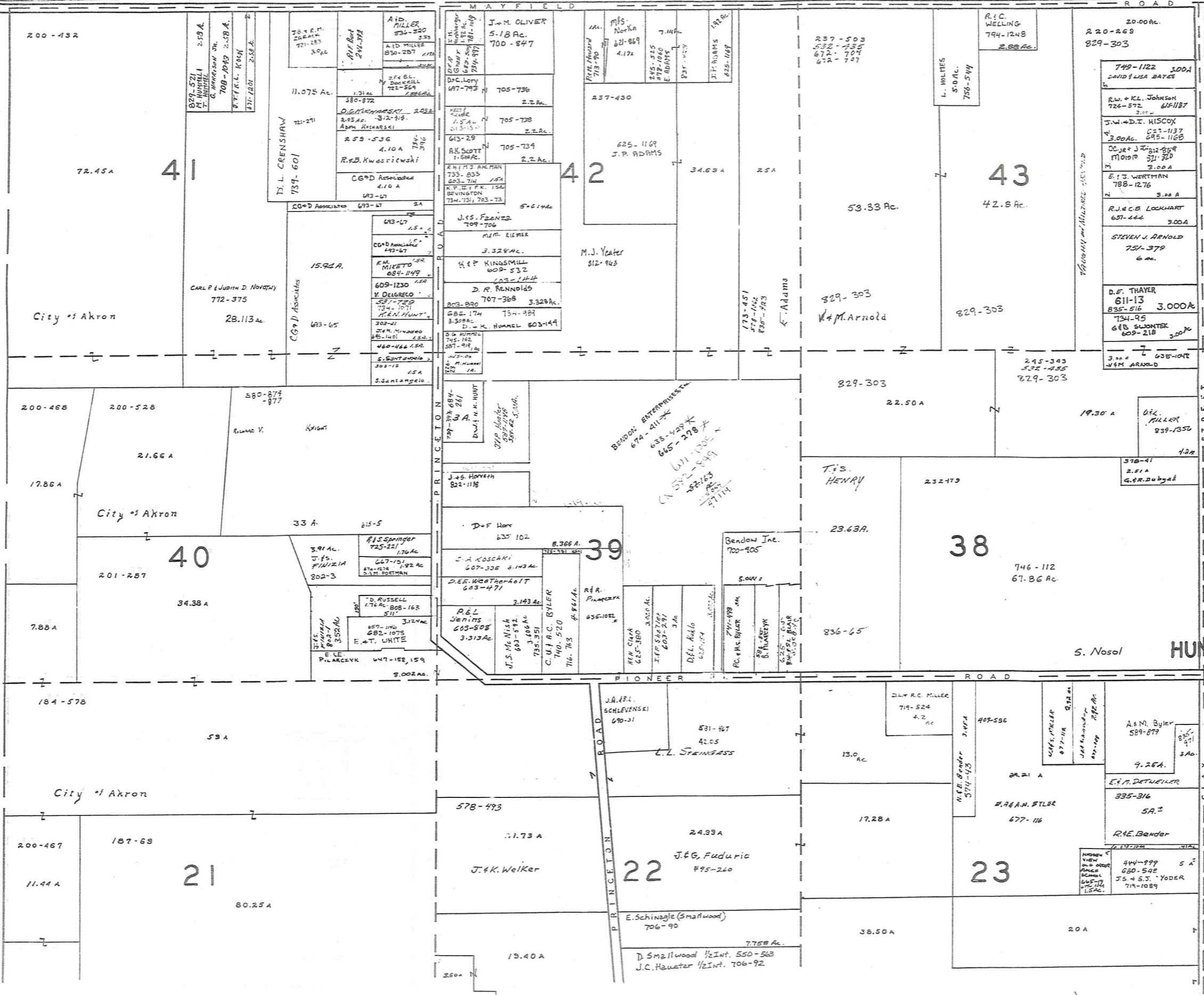
CLARIDON TOWNSHIP

250



SCALE 1"=300'
JAN 4, 1989
RELATIVE REPRESENTATION

A	B	C	D
E	F	G	H
I	J	K	L
M	N	O	P



* Inadequate description

13.25 A

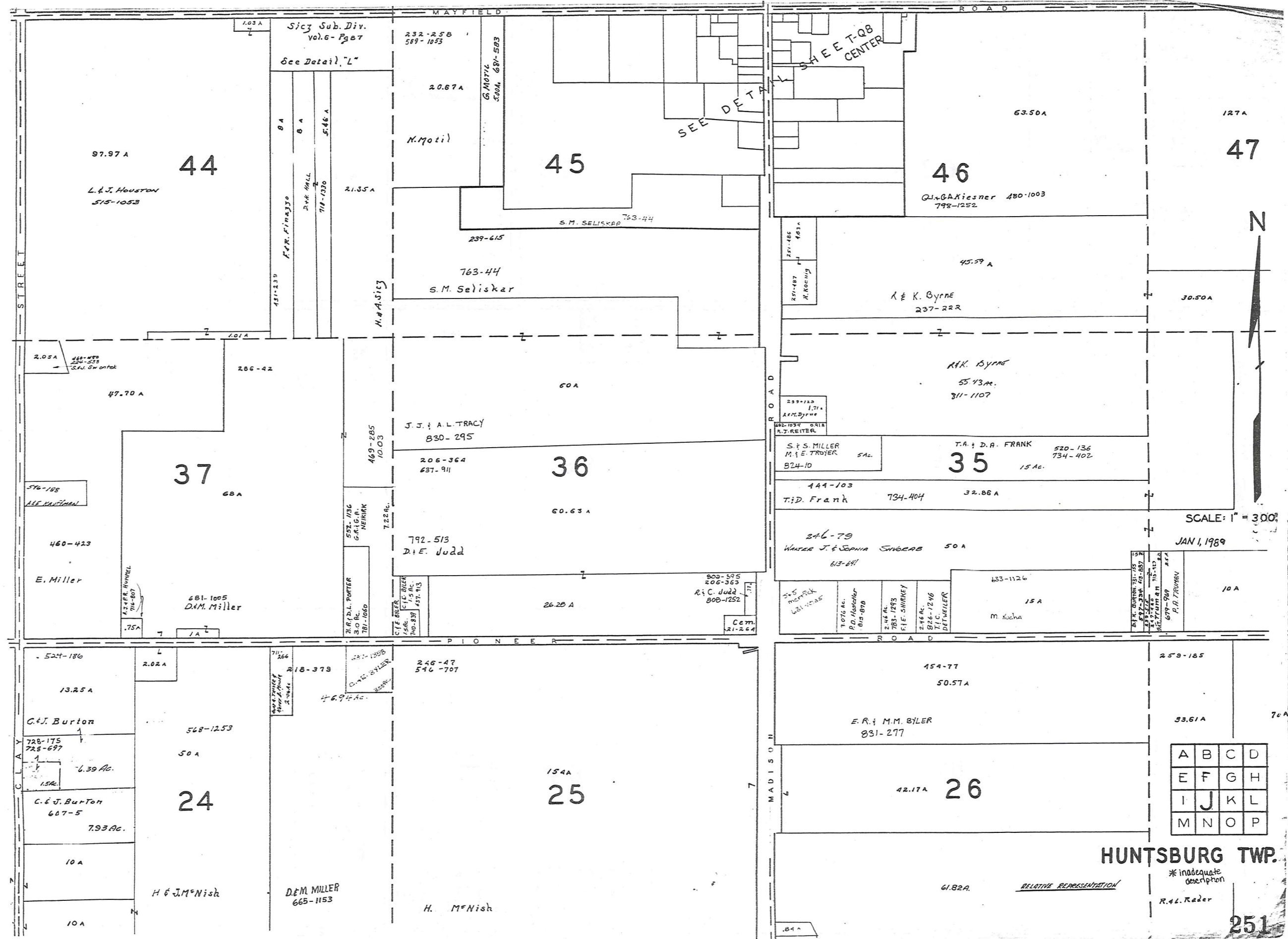
14 A

10 A

10 A

BENDON ENTERPRISES INC.
674-4111
633-9233
645-2788
674-1705
674-8499
674-1114

HUNTSBURG TWP.



A	B	C	D
E	F	G	H
I	J	K	L
M	N	O	P

HUNTSBURG TWP.

* Inadequate description
R.L. Rader

SCALE: 1" = 300'

JAN 1, 1989

RELATIVE REPRESENTATION

SEE DETAIL

SHEET-Q8 CENTER

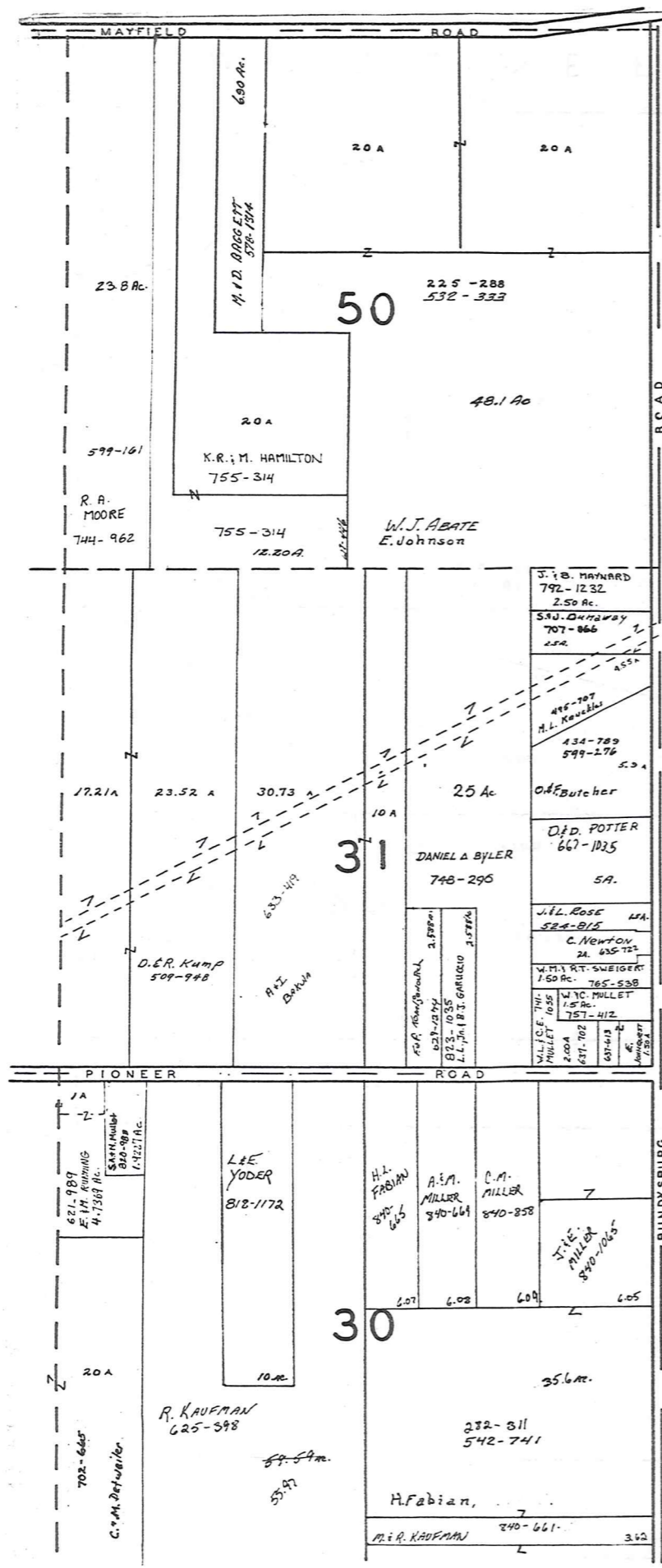
See Detail, "L"

STREET

MAYFIELD ROAD

PIONEER ROAD

MADISON



A S H T A B U L A C O U N T Y

MAYFIELD ROAD US 322								
1	2	3	4	A	5	6	7	8
1.08 A	1 A	1 A	1 A	.60 A	1 A	1 A	1 A	1.13 A
403-331 659-111 F.F.B. Snow	431-239 F.F.R. Fimbrijo	225-498 H. Keyes et al	D.H. HML	1.90				

SICZ SUBDIVISION
VOL. 6 PG. 87
LOT 44
SCALE 1" = 100'



SCALE 1" = 300'

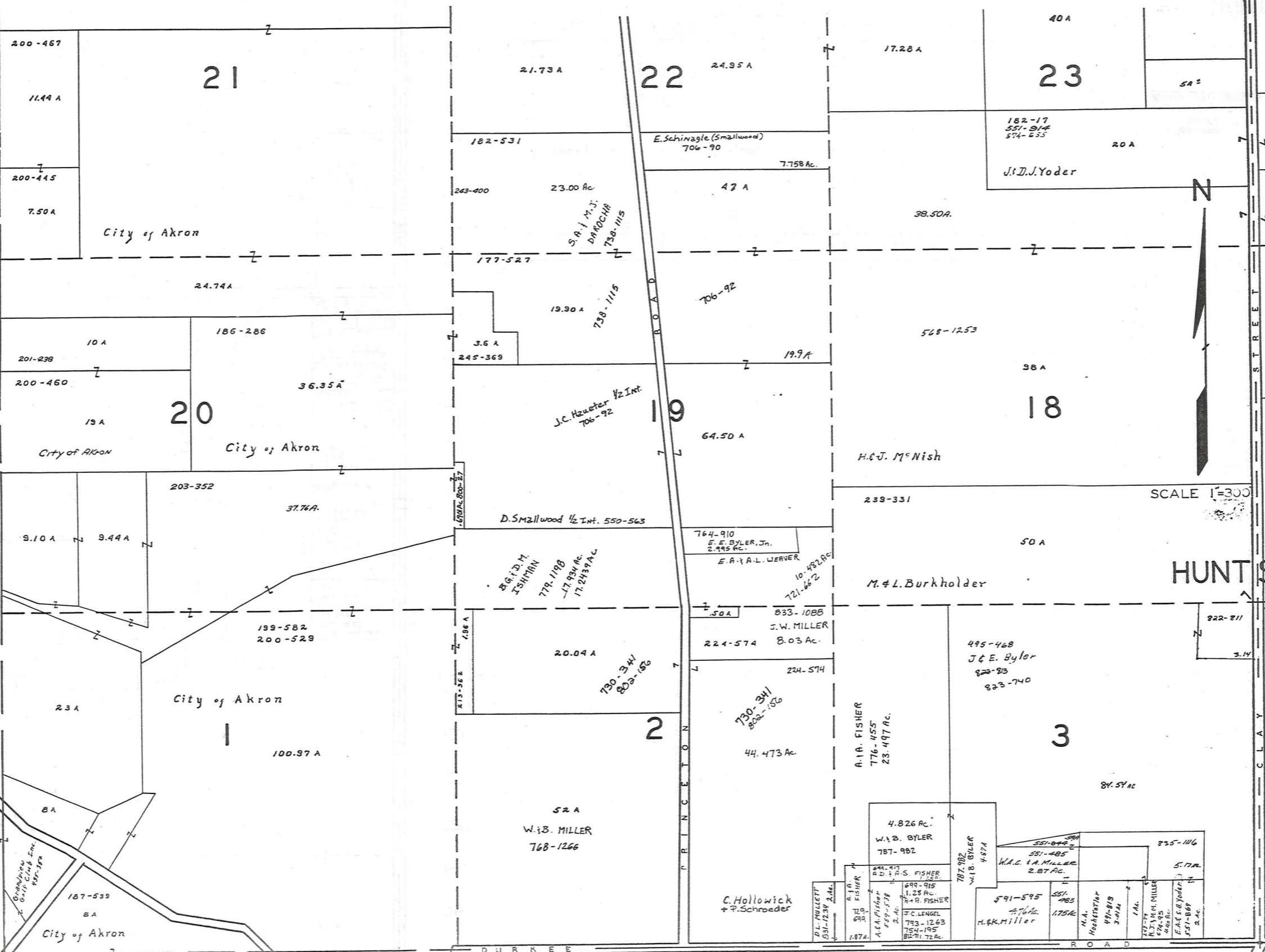
JAN 1, 1989

* Inadequate description
RELATIVE REPRESENTATION

A	B	C	D
E	F	G	H
I	J	K	L
M	N	O	P

HUNTSBURG TWP.

C L A R I D O N T O W N S H I P



SCALE 1"=300'

A	B	C	D
E	F	G	H
I	J	K	L
M	N	O	P

HUNT SBURG TWP

RELATIVE REPRESENTATION

JAN 1, 1989

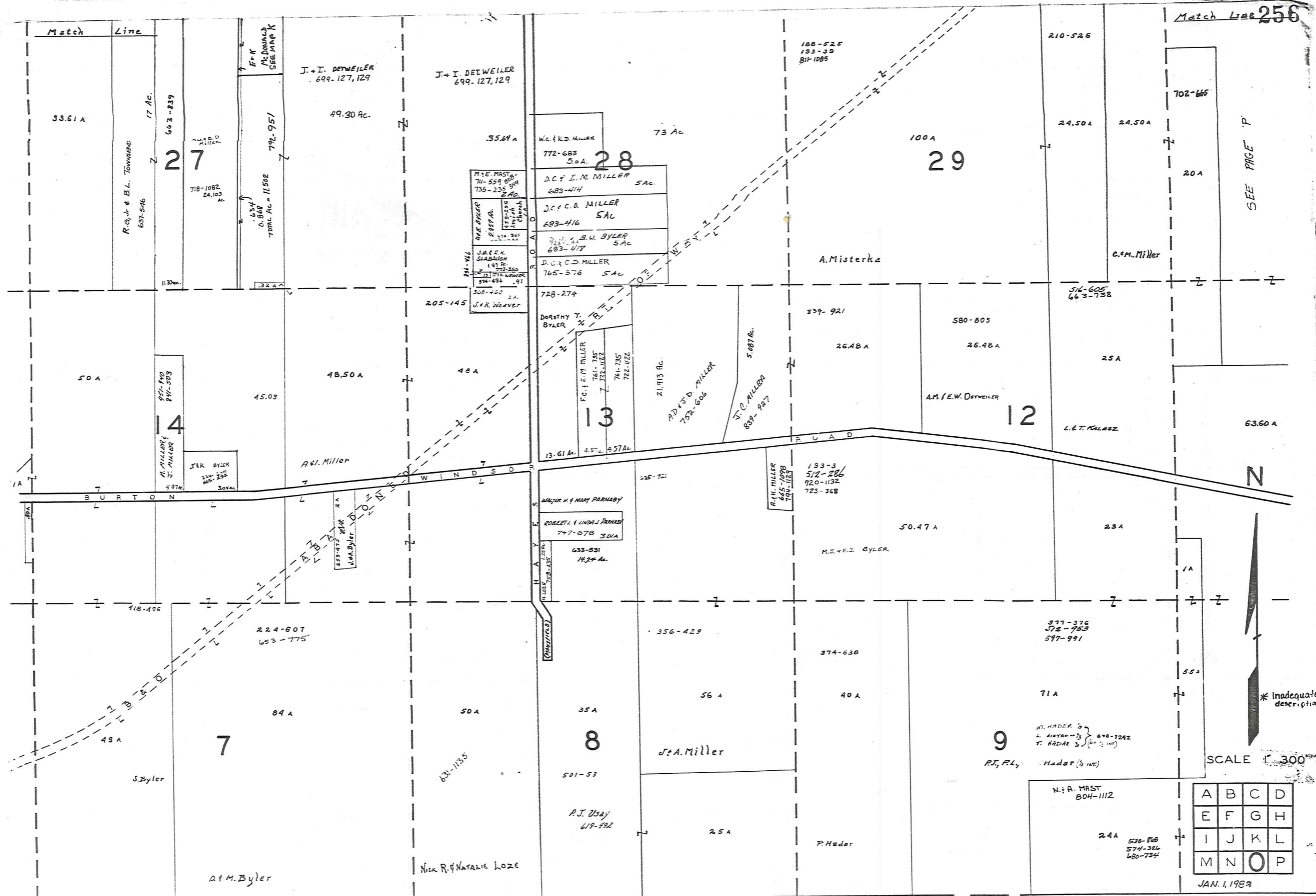
8.13 Ac.

64.21 A

31.75 A

* Inadequate description

M I D D L E F I E L D T O W N S H I P



M I D D L E F I E L D T O W N S H I P H U N T S B U R G T W P

A	B	C	D
E	F	G	H
I	J	K	L
M	N	O	P

JAN. 1, 1989

RELATIVE REPRESENTATION

N. R. MAST
804-1112

2.4A
538-868
574-326
680-734

9
P.T., P.L.,
Hadar (1/2 INT)

J. A. Miller

R. J. Olson
619-792

Nick R. & NATALIE LOZE

A. M. Byler

S. Byler

P. Hadar

M. HADAR
L. SIATRO
T. HADAR

377-376
572-753
597-991

374-638

356-429

633-531
14.24 Ac.

ROBERT L. & LINDA J. PARNABY
747-678 3.01A

WALTER H. & MARY PARNABY

R. K. MILLER
665-1098
794-1129

M. J. & E. J. BYLER

50.47 A

L. T. KALASZ

A. M. F. E. W. DETWEILER

580-805

239-921

21,913 Ac.

ADRIAN MILLER
752-606

J. C. MILLER
839-927

DOROTHY T. BYLER

728-274

F. C. E. M. MILLER
761-757
761-735
722-1122

13.61 Ac. 4.57 Ac.

48 A

48.50 A

45.03

A. G. L. MILLER

J. K. BYLER
234-622
234-622
30va

50 A

M. MILLER
971-840
844-503

14

205-145

J. & K. WEAVER
308-460
2A

D. C. C. MILLER
765-576 5AC

D. C. C. MILLER
724-330
683-417 5AC

J. & E. K. SCABAUGH
191-81
223-350
514-494 .91

D. C. C. MILLER
683-414 5AC

D. C. C. MILLER
683-414 5AC

W. C. & K. D. MILLER
772-683
5.0A

73 Ac

35.69 A

J. & I. DETWEILER
699-127, 129

J. & I. DETWEILER
699-127, 129

F. K. McDONALD
SEE MAP K

718-1082
24.103 AC

792-951
TOML. AC = 11.502

27

R. G. & B. L. TOWNSEND
637-546
17 Ac.

33.61 A

210-526

24.50A

24.50A

702-665

20A

SEE PAGE P

C. M. Miller

516-605
663-738

25A

N

* Inadequate description

SCALE 1" = 300'

HUNTSBURG TP. CENTER

INDEX TO PROPERTIES HAVING #NO.'S

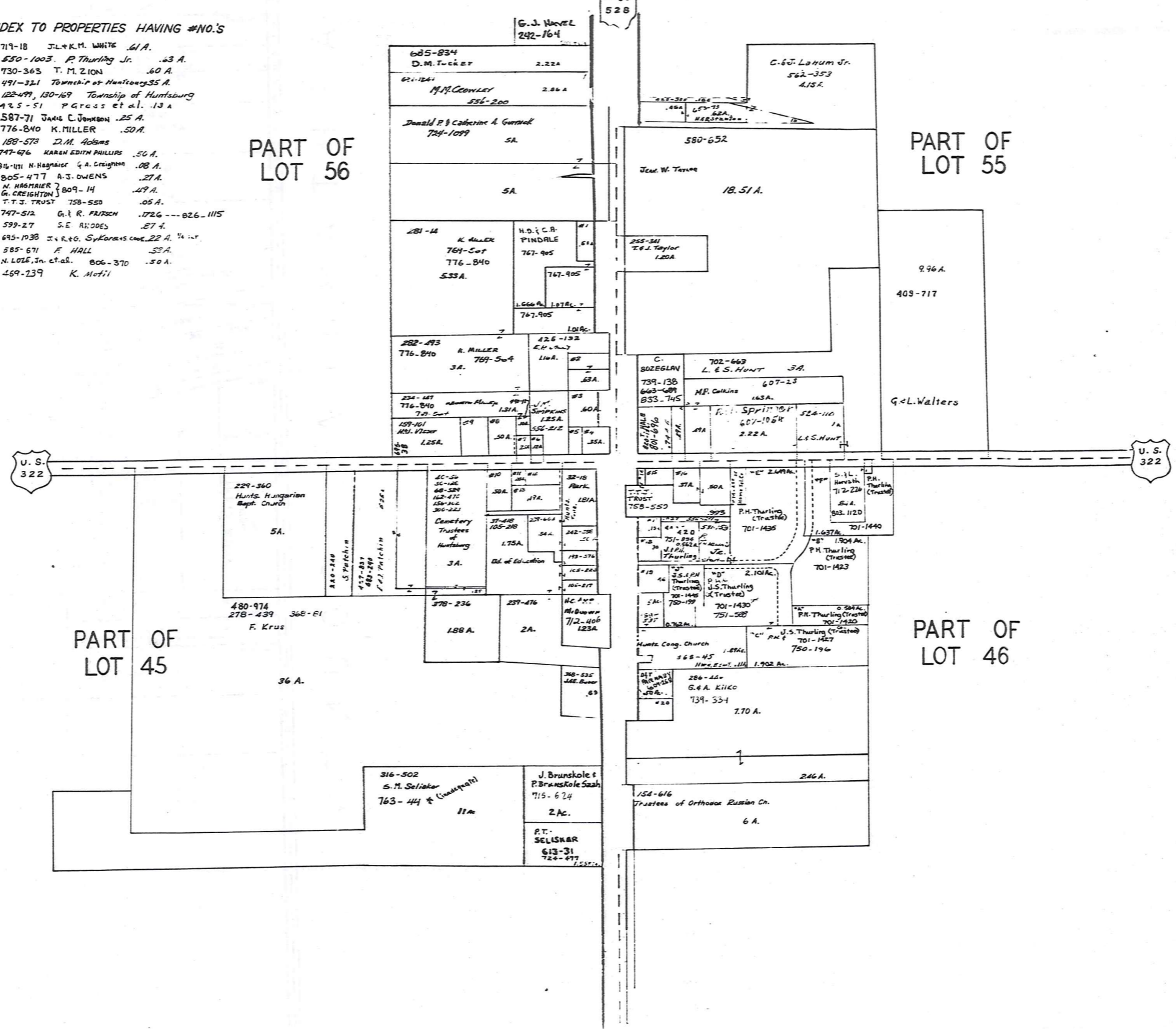
- #1 719-18 J.L. & K.M. WHITE .61 A.
- #2 550-1003 P. Thurling Jr. .63 A.
- #3 730-363 T. M. ZION .60 A.
- #4 491-321 Township of Huntsburg 35 A.
- #5 122-499, 130-169 Township of Huntsburg
- #6 425-51 P. Gross et al. .13 A.
- #7 587-71 JAMES C. JOHNSON .25 A.
- #8 776-840 K. MILLER .50 A.
- #9 188-578 D.M. Adams
- #10 747-676 KAREN EDITH PHILLIPS .50 A.
- #11 814-111 N. HAGMAIER & A. CREIGHTON .08 A.
- #12 805-477 A.J. OWENS .27 A.
- #13 N. HAGMAIER } 809-14 .49 A.
- } G. CREIGHTON
- #14 T.T.S. TRUST 758-550 .05 A.
- #15 747-512 G. & R. FRISCH .1726 --- 826-1115
- #16 599-27 S.E. ARODES .27 A.
- #17 695-1038 J. & R. O. SYKORAKS cont. 22 A. 1/4 int.
- #18 585-671 F. HALL .52 A.
- #19 N. LOLE, Jr. et al. 806-370 .50 A.
- #20 169-239 K. Motil

PART OF
LOT 56

PART OF
LOT 55

PART OF
LOT 45

PART OF
LOT 46



JAN. 1, 1989
SCALE: 1 in. = 200'

RELATIVE REPRESENTATION

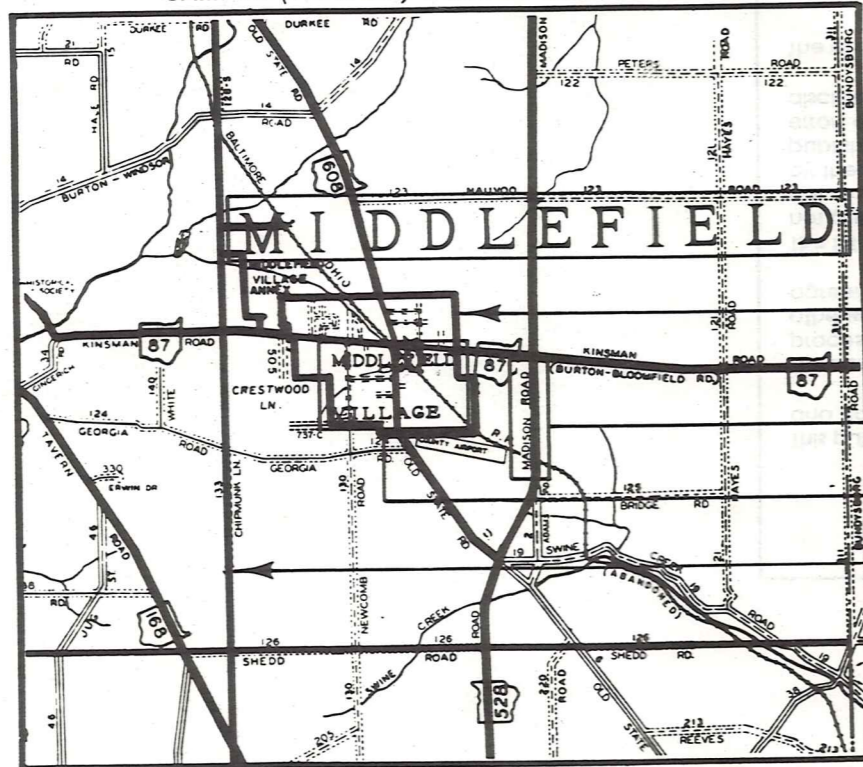
* Inadequate description

Q8 CENTER

Explanation and Use Sheet for Geauga County, Ohio

A

SAMPLE (PARTIAL) COUNTY INDEX MAP



Tract Lot Number

Acreage

Township Name

Village Boundary

Street Name

Village Name

Township Boundary

Owners Name

Denotes Continuous Ownership

Deed Book & Page

Map Page Number

Township Name

Village Name

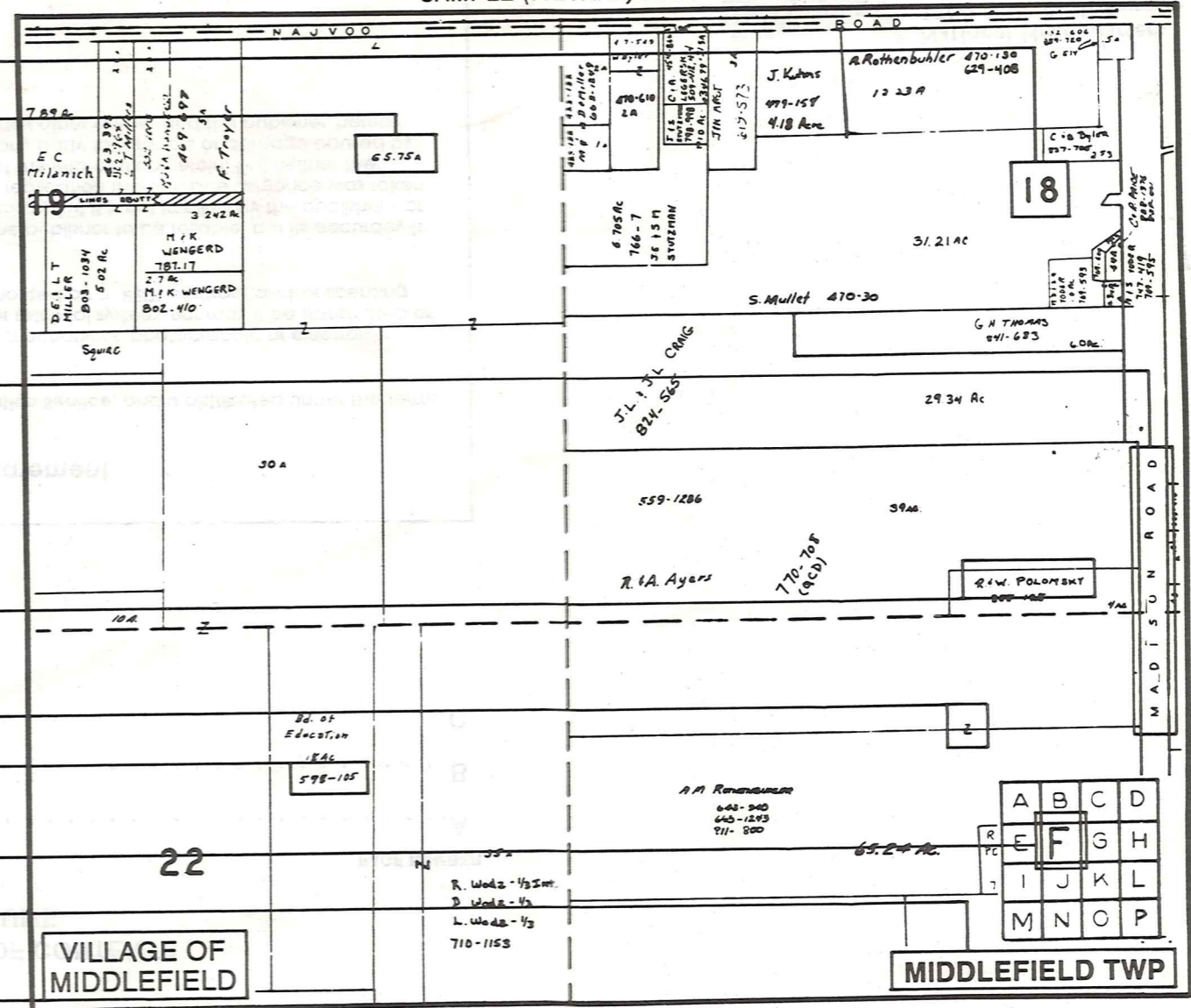
Village Boundary

Street Name

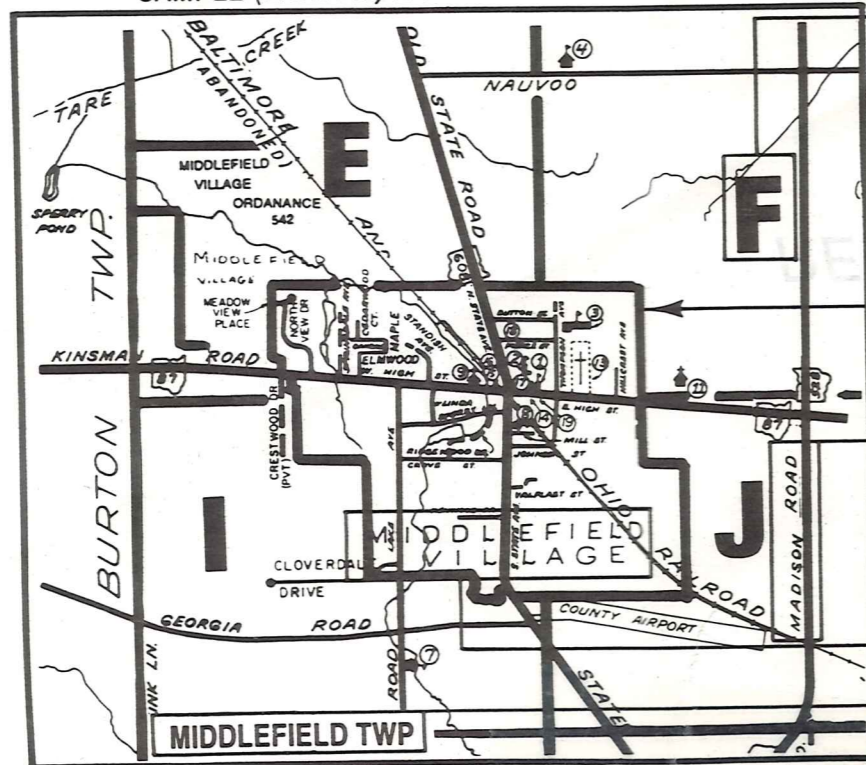
Village Name

Township Name

SAMPLE (PARTIAL) MAP PAGE



SAMPLE (PARTIAL) MUNICIPALITY INDEX MAP



USE OF THE MAP VOLUME

- LOCATE THE GENERAL AREA OF INTEREST ON THE COUNTY INDEX MAP AND NOTE THE MUNICIPALITY NAME (TOWNSHIP OR VILLAGE).
 - REFER TO THE TABLE OF CONTENTS AND NOTE THE BEGINNING ATLAS PAGE NUMBER FOR THE MUNICIPALITY OF INTEREST.
 - TURN TO THE PAGE INDICATED, ON THIS PAGE WILL APPEAR AN INDEX MAP FOR THAT MUNICIPALITY.
 - LOCATE THE GENERAL AREA OF INTEREST AND NOTE THE MAP PAGE NUMBER. THIS MAY BE EITHER A LETTER OR A NUMBER.
 - MAP PAGES ARE IN ALPHABETICAL (OR NUMERICAL) SEQUENCE FOLLOWING THE MUNICIPALITY INDEX MAP. FOLLOW SEQUENCE TO THE MAP PAGE INDICATED.
 - LOCATE SPECIFIC PARCEL OF INTEREST AND NOTE THE DESIRED INFORMATION.
- NOTE: ON SOME MAPS YOU MAY BE REFERRED TO A DETAIL SHEET SHOWING AN ENLARGEMENT OF THE AREA. THESE MAPS ARE FOUND AT THE END OF THE REGULAR MAP PAGES IN EACH MUNICIPALITY IN EITHER ALPHABETICAL OR NUMERICAL SEQUENCE.
- NOTE: CHARDON VILLAGE HAS TITLE SHEETS. TO LOCATE OWNERS NAME, NOTE THE PARCEL NUMBER, REFER TO THE TITLE PAGE FOLLOWING THE MAP OF INTEREST, FOLLOW NUMERICAL SEQUENCE TO THE PARCEL NUMBER OF INTEREST AND NOTE THE DESIRED INFORMATION. IN ALL OTHER MUNICIPALITIES THE OWNERS NAME APPEARS ON THE MAP PAGE.